

Section 8.5

Understanding sentences containing 'either' and 'or'

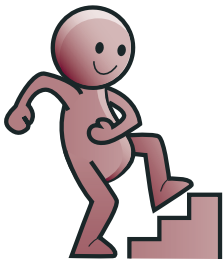


Why is this important?

'Either' and 'or' constructions are an integral part of making choices or decisions/used frequently in everyday situations (e.g. in school, the teacher may say 'You can either play with the sand or the water'; at home, mum may say 'You can either have milk or juice'). The more this can be emphasised in everyday life, the better.

What to do

- Gather together a selection of toys or pictures.
- Ask the child to point to something, e.g.
 - ★ 'Point to *either* teddy *or* monkey.'
 - ★ 'Point to *either* the slide *or* the swing.'
 - ★ 'Give the cup to *either* the girl *or* the boy.'



Step up

- Ask the child to describe some pictures using 'either'/'or' (e.g. using a picture of a girl with an apple and a banana to encourage the child to say 'The girl wants either the apple or the banana').
- Take turns to show a choice of two items or pictures using 'either'/'or'.
- Set up specific contexts to practise the structure (e.g. in a shopping game, present two items 'What can the lady choose from?' 'Either ... or ...?') You may have to begin by using 'either' and helping with 'or'.

Step down

- Use these instructions during everyday routines as you offer choices (e.g. 'Do you want *either* the apple *or* the banana?', 'Put on *either* your blue coat *or* your red coat').

