

Other things to try: 6c

Understanding and using 'where', 'who' and 'what' questions

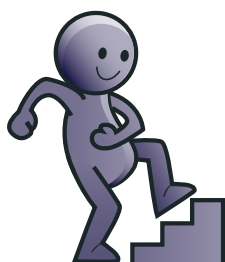


Why is this important?

Wh- questions are an integral part of everyday conversations and routines. Children need to understand these structures to be able to respond appropriately. Children must learn to ask questions to become active learners and to take responsibility in their own learning.

What to do

- This activity helps children to understand and discriminate between different question forms through familiar and repetitive songs like 'Old MacDonald had a Farm'.
- Sing the song together.
- After each verse ask:
 - ★ 'Who's in the song?'
 - ★ 'Where are they?'
 - ★ 'What animals are there?'
 - ★ 'What noise did the animal make?'



Step up

- Use more difficult animals (e.g. geese). To begin with, you may need to support the new vocabulary with pictures.
- Try personalising the owner of the farm – use someone in the group (e.g. 'Billy Smith had a farm ...').
- Similarly, substitute the 'where' part (e.g. 'Old MacDonald had a zoo/garden/garage').
- Enjoy other nursery rhymes which lend themselves to 'wh-' questions:

★ 'Humpty Dumpty'	★ 'I am the Music Man'
★ 'Jack and Jill'	★ 'Incy Wincy Spider'

Step down

- Use signs/symbols/written words to help understanding of the question words.
- Use pictures of the animals.

