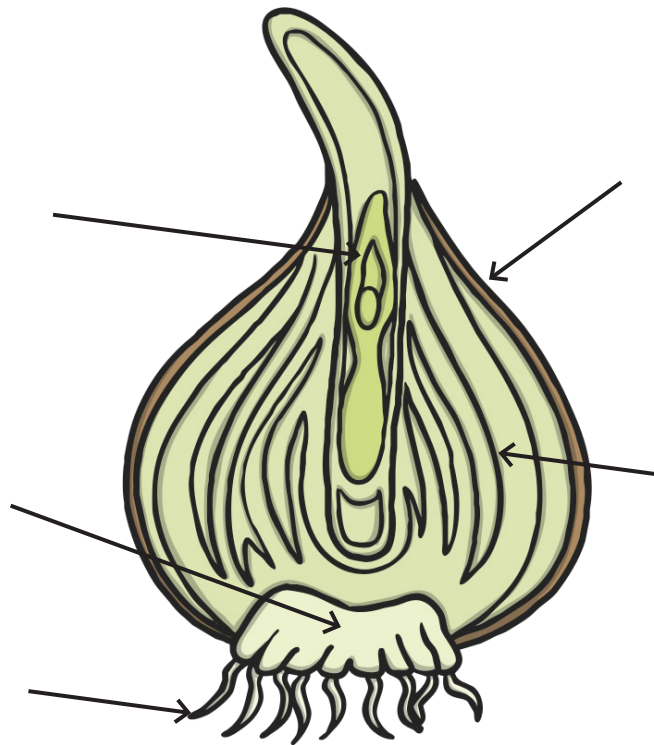


# Parts of a Bulb

Read, cut, sort and paste the information below to create a labelled diagram of a bulb.



## Did you know?

Some plants grow first from a seed, and then develop a bulb that helps them to grow back year after year.

A bulb lets the plant rest underground over the winter when it is too cold, then grow back later in the year when conditions are right.

Some common plants that grow from bulbs include; daffodils, tulips, snowdrops, lilies and allium.



visit [twinkl.com.au](https://www.twinkl.com.au)



<b>Flower Bud</b> Future flower stored inside the bulb for protection.	<b>Tunic</b> A papery outer covering.	<b>Roots</b> Take up water and nutrients for the plant.
	<b>Basal Plate</b> Connects the flower, scales and roots of the plant.	<b>Scales</b> Thick leaves that store the food.

# Answer Sheet

